



imagination at work

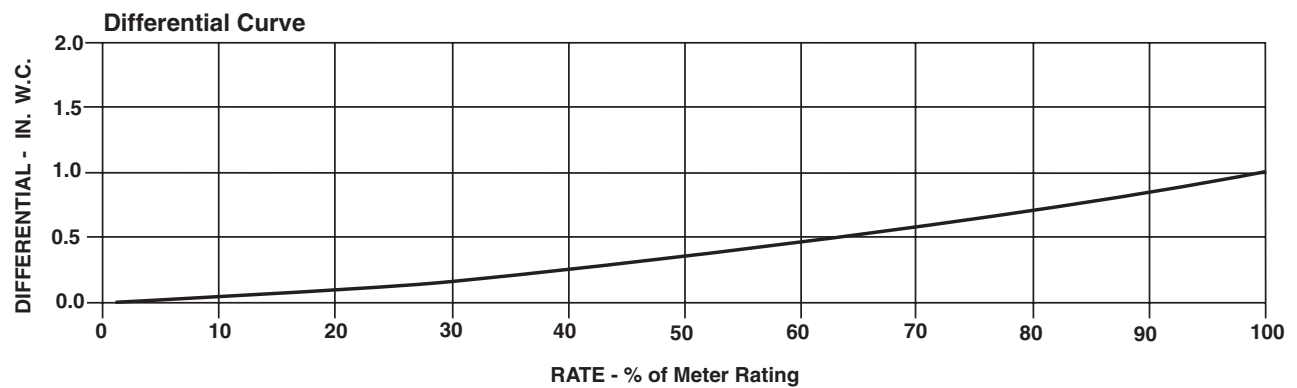
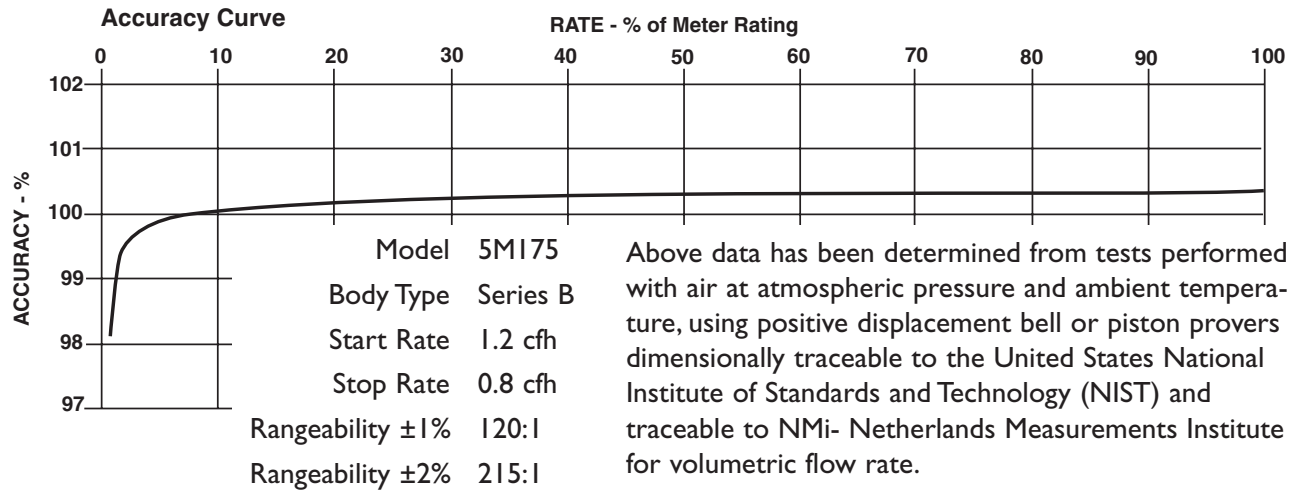
SERIES B3: 5MI75 ROOTS® Meter

	UNITS	Imperial	UNITS	Metric
Temperature Range	deg. F	-40 to +140	deg. C	-40 to +60
Base Rating (Q Max.)	acfh	5000	m ³ /h	141,5
Max. Operating Pressure (MAOP)	psig	175	kPa	1200
Leak Test (125% MAOP)	psig	219	kPa	1510
Static Test (2 x MAOP)	psig	350	kPa	2400
Rangeability +/- 1%	ratio	120:1	ratio	120:1
Rangeability +/- 2%	ratio	215:1	ratio	215:1
Start Rate	cfh	1.2	m ³ /h	0,0340
Stop Rate	cfh	0.8	m ³ /h	0,0227
Flow Rate @ 0.5" w.c., Gas	cfh	3975	m ³ /h	112,6
Avg. Differential, 100% Flow	in. w.c.	1.1	mbar	2,6
Max. Pressurization Rate	psig/sec	5	kPa/sec	35
Max. Operating Speed	rpm	2250	rpm	2250
Gear Ratio	ratio	270:1	ratio	953,125:1
Displaced Volume/Revolution	cf	0.037037	m ³	0,0001049
Drive Rate, CD	cf/rev	10	m ³ /rev	1
Drive Rate, TD	cf/rev	100	m ³ /rev	10
Temp. Compensating Range (TC,TD)	deg. F	-20 to +120	deg. C	-29 to +49
Min. Odometer Reading	cf	0.2	m ³	0.002
Odometer Turnover	yrs.	2.28	yrs.	8,06
Nominal Pipe Size	in.	3	mm	80
Flange-to-Flange	in.	6-3/4	mm	172
Flange Connection	ANSI	125#FF	ANSI	125#FF
Bolts per Flange	qty.	4	qty.	4
Bolt Size ¹	in.	5/8 - 11	in.	5/8 - 11
Flange Bolt Hole Depth	in.	15/16	mm	23,8
Bolt Torque: Lubricated/Non-Lub.	ft.-lb.	55/60	N-m	74/81
Restricting Orifice (120%)	in.	23/32	mm	18,256
Oil Capacity – Side Inlet	oz.	1.25	ml	37
Oil Capacity – Top Inlet	oz.	7.65	ml	226
<i>Counter Version (CTR)²</i>				
Net Weight	lbs.	35	kg	15,9
Shipping Weight	lbs.	38	kg	17,2
Carton Size	in.	27 x 11 x 9	cm	69 x 28 x 23
<i>Counter with Instrument Drive (CD)²</i>				
Net Weight	lbs.	38	kg	17,2
Shipping Weight	lbs.	41	kg	18,6
Carton Size	in.	31 x 15 x 13	cm	79 x 38 x 33

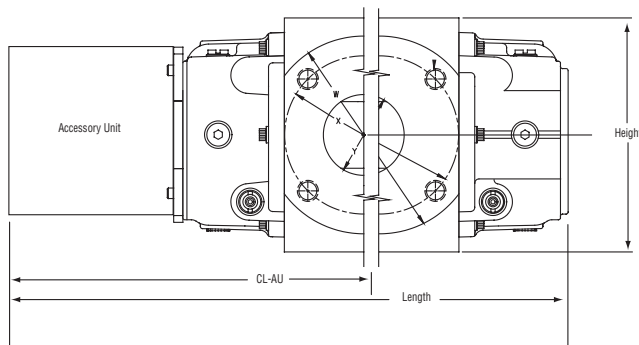
NOTES:

¹ Bolt Length varies by application.

² Weights and dimensions available for CPS, TC, TD, TPS upon request.



5M175 Series B3	Overall Length		Overall Height		Width (Flange/Flange)		Centerline to Accessory End (CL-AU)		Request Detailed Drawing Number
	inches	mm	inches	mm	inches	mm	inches	mm	
CTR / TC	20	508	6-31/32	177	6-3/4	172	12-5/16	313	D054517-000
CD / TD	23-27/32	606	6-31/32	177	6-3/4	172	16-5/32	411	D054431-000
CPS / TPS	22-1/8	562	6-31/32	177	6-3/4	172	14-7/16	368	D054670-000
IMC/C	23-1/2	597	6-31/32	177	6-3/4	172	15-13/16	402	D056486-000
IMC/W	24-1/2	622	6-31/32	177	6-3/4	172	16-13/16	427	D056702-000



To order

Specify: Meter Series, Size and Type (i.e., GE Meter Series B3 5M175 CD).

For CD or TD, specify Inlet (Top or Side) and ID Rotation (CW-B or CCW-A).

For Pulsar, specify Single or Dual Connectors and Connector Type (MS Circular, Conduit or Cable Gland).

For more specific ordering information on the electronic products, request: TS:SPP, TS:IMC/C or S:IMC/W.

Contact the factory for other available information, options, or special requests.

GE Meters & Instruments



imagination at work